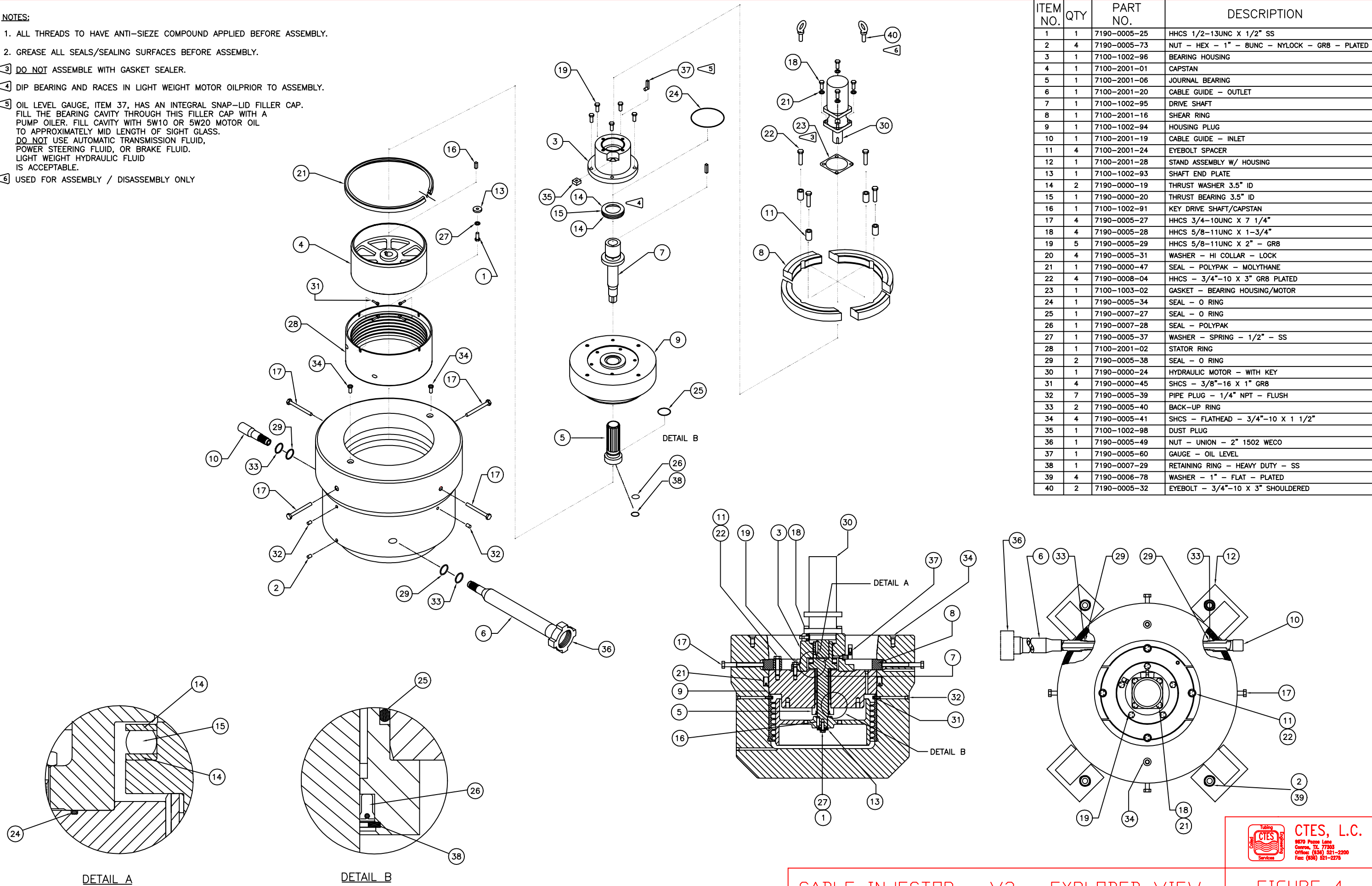


- NOTES:
- 1. ALL THREADS TO HAVE ANTI-SIEZE COMPOUND APPLIED BEFORE ASSEMBLY.
 - 2. GREASE ALL SEALS/SEALING SURFACES BEFORE ASSEMBLY.
 - 3 DO NOT ASSEMBLE WITH GASKET SEALER.
 - 4 DIP BEARING AND RACES IN LIGHT WEIGHT MOTOR OIL PRIOR TO ASSEMBLY.
 - 5 OIL LEVEL GAUGE, ITEM 37, HAS AN INTEGRAL SNAP-LID FILLER CAP. FILL THE BEARING CAVITY THROUGH THIS FILLER CAP WITH A PUMP OILER. FILL CAVITY WITH 5W10 OR 5W20 MOTOR OIL TO APPROXIMATELY MID LENGTH OF SIGHT GLASS. DO NOT USE AUTOMATIC TRANSMISSION FLUID, POWER STEERING FLUID, OR BRAKE FLUID. LIGHT WEIGHT HYDRAULIC FLUID IS ACCEPTABLE.
 - 6 USED FOR ASSEMBLY / DISASSEMBLY ONLY



CABLE INJECTOR - V3 - EXPLODED VIEW

FIGURE 4